

Location of Ogden City  
Hospital, on the  
following land,

Part of Block 15 - Plat C.

Beginning at the N.W. cor  
Block 15,

thence S. 20 rods  
" E 10 "  
" N. 20 "  
" W 10 " to beg.

Oct 5<sup>th</sup> 91

I located point A midway between  
Monuments - Then set point B 17.0 East.  
(Changed - see below)

turned my the angle south and set

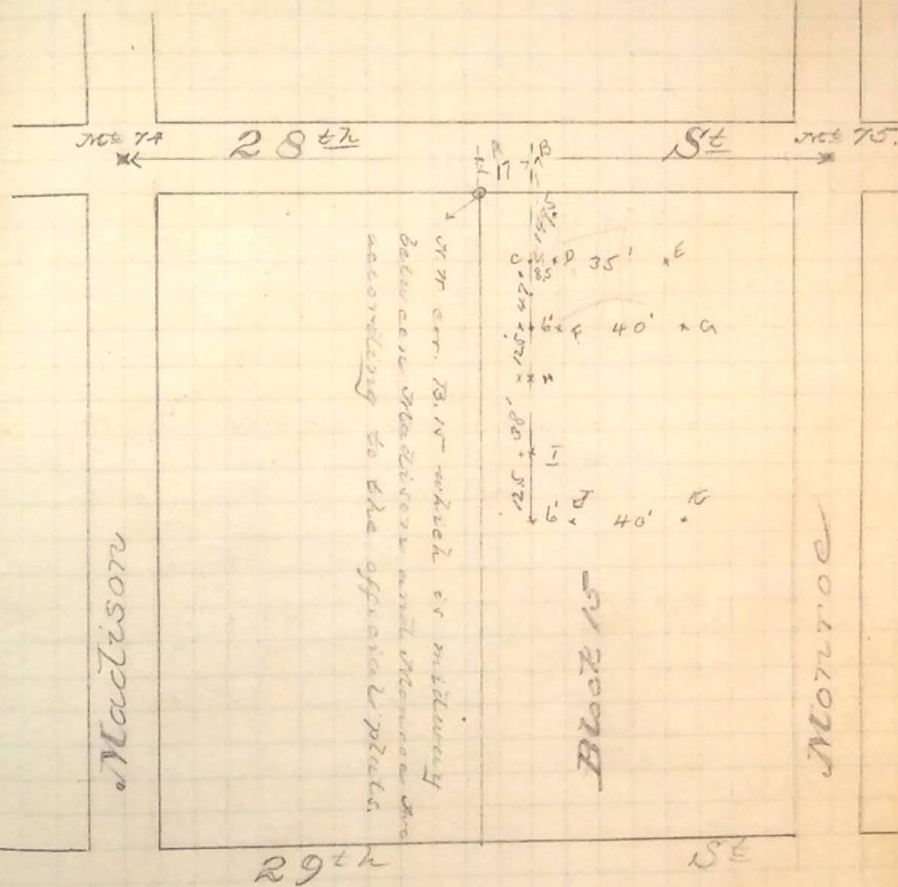
Auto<sub>s</sub> as shown viz D, E, F, G, H, I, J + K.

Said points being on base or

at right angles to same - such tacks  
bring of next lines running E + W. and 3' out  
from next lines running N. + South

Note: - Oct 6<sup>th</sup> Moved all stakes East  
15 feet - Thus making final location  
of building 35 feet E. of N. line of lot

Set stakes on level at each corner  
of building - Elev. 100.00 - This plane  
being at ground elevation at D. and  
2.3 ft above ground D - + at other points  
above ground as shown bottom next page



Set B.M. 45° E of cor of building  
Elev. - same as grades for building = 100.00

Elevations of ground at D, E, F etc, as shown

D 97.79  
E 98.34  
F 98.10  
G 99.06

H 98.20  
I 98.56  
J 98.94  
K 100.00